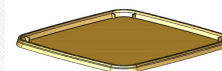


## UniPak Special Lid 195 x 195 mm

**Product no:** 2541  
**Shape:** Square



### DIMENSIONS

External length top:	192.6 mm ± 1 mm	External width top:	192.6 mm ± 1 mm
Height:	8.6 mm ± 0.5 mm		

### WEIGHT

Weight: 30 g ± 3 g

### PERFORMANCE

**Stacking tests** The stacking tests have been performed to the standard virgin raw material as stated below at 23°C over a period of 2 months. Stackability depends on many factors and the above data is meant as an indication only. Consequently, customers should make internal trials to determine the viability of stacking and transportation.

**Special:** Lid with orientation blocks.

### CLOSURE SYSTEM

Closure type: Snap-On

### DECORATION

Decoration available: None

### RAW MATERIAL (MECHANICAL PROPERTIES)

Raw material options: PP

Masterbatch colours: Colours according to Berry standard selected pantone colours.

**Hot temperatures:** The material chosen has a very good heat resistance and the packaging is suitable for hot filling. Notably, plastic packaging become flexible when subjected to hot filling temperatures and care must be taken in relation to stacking immediately after hot filling. The Berry packaging must be tested by the customer with the actual product before approval for use at hot temperatures.

**Cold temperatures:** Freezing conditions require special resins available on request. The Berry packaging must be tested by the customer with the actual product before approval for use at low temperatures.

### QUALITY SPECIFICATIONS

**Approvals:** This Berry Product complies with the European Union Commission Regulation No. 10/2011/EC with amendments, relating to materials and articles intended to come into contact with food, unless otherwise stated. In accordance with EU legislation, it is the responsibility of the customer to ensure that the supplied product is suitable for the intended use.

**Shelf life:** The compliance of the product to the technical specifications in this data sheet is guaranteed for 12 months after the date of the delivery subject to suitable storage. Suitable storage include protection of e.g. direct sun light, rain, very low temperatures or very high temperatures over a long period.

**Quality information:** Deviations in the product specifications in this data sheet of 0.025% or less (i.e. 25 items per 100,000) are considered acceptable in the industry and therefore cannot be construed as a defect. Also, please refer to the General Sales Terms and Conditions in force at the time of delivery.

**Compliance and product suitability:** For all information related to food contact compliance and product suitability ask for the Declaration of Compliance.